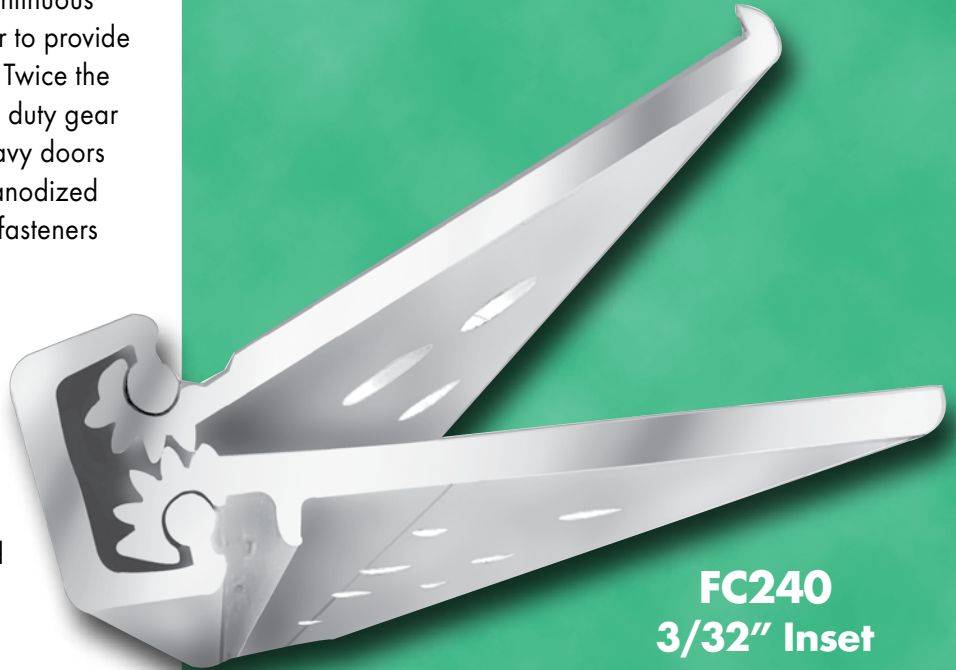


FC Series Continuous Gear Hinges

Concealed

Durable and attractive, these continuous gear hinges are the right answer to provide maximum life for your entrance. Twice the number of bearings as standard duty gear hinges means you can hang heavy doors with confidence. The attractive anodized finishes will last and concealed fasteners provide great security.

- Hinges are non-handled (prior to field cutting)
- #12 - 24 x 1/2" Self-drilling mounting screws are included
- Anodized finishes: Clear, Dark Bronze and Black
- Standard lengths: 83", 85", 95" and 120"

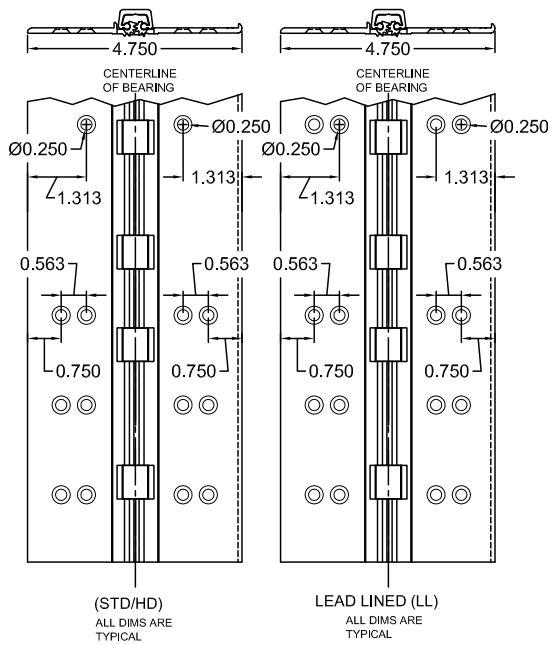
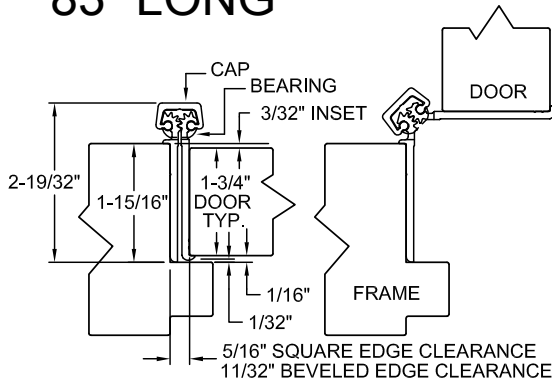


FC240
3/32" Inset

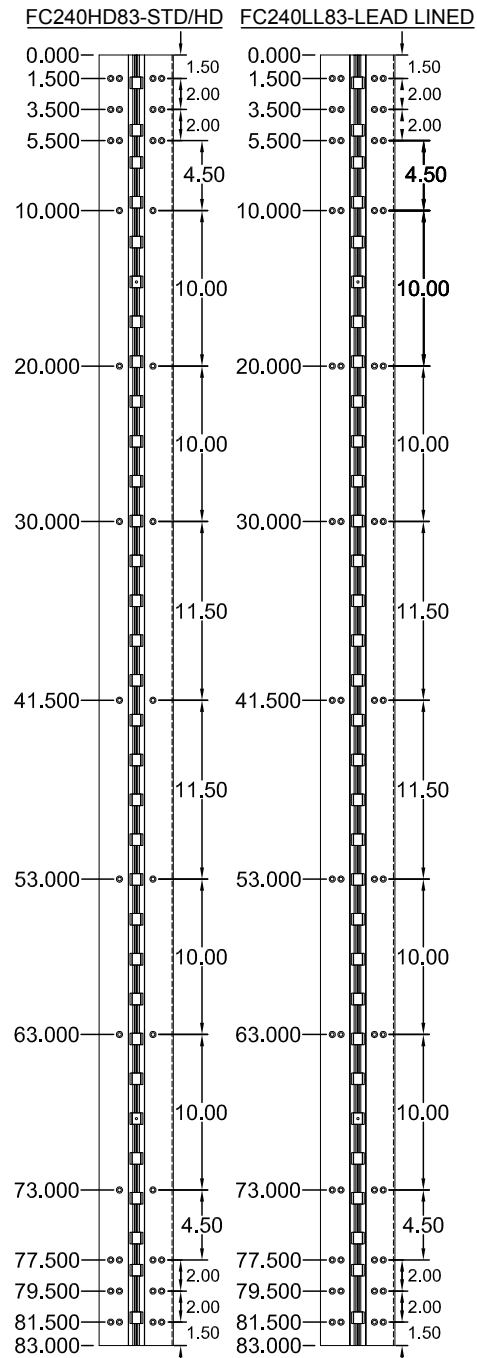


FC110
Flush

FC240HD 83" LONG



SCREW DETAIL			DESCRIPTION
MODEL	STD/HD QTY.	LL QTY.	
FRAME	19	26	12-24 X 7/8" PH. F.H. UNDERCUT SELF DRILLING THREAD FORMING TEK SCREW
DOOR	19	26	12-24 X 7/8" PH. F.H. UNDERCUT SELF DRILLING THREAD FORMING TEK SCREW



ALL DIMS ARE TO CENTERLINE OF HOLES

FC240-83-00.DWG