

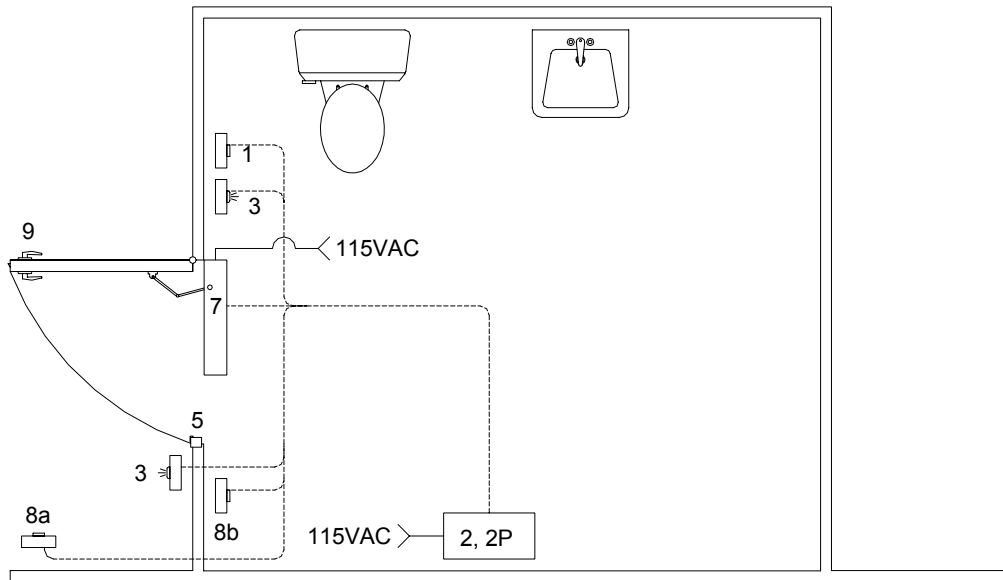
Overview

The barrier-free washroom with electronic locking system allows for accessibility into and out of the washroom by persons with physical disabilities.

Operation

When the washroom is not occupied, entering the washroom is done by opening the door manually or by pressing the exterior actuator (8a), which will open the door automatically (7). Once inside the washroom, pressing the interior lock button (1) will lock the door and disable the exterior actuator (8a). The indicator (3) inside and outside the washroom will change from green to red to indicate that the washroom is in use. Exiting the washroom is done by opening the door manually or by pressing on the interior actuator (8b), which will unlock the door, open the door automatically, and change the indicator (3) inside and outside the washroom from red to green to indicate that the washroom is not occupied.

Drawing



Symbol	Quantity	Item Number	Description
1	1	TA-3270	Push To Lock Button
2	1	TA-2799	Logic Controller
2P	1	TA-2501	Power Supply
3	2	TA-3401	Indicator
5	1	TR-EN400-12D-RS-LB-LC-100	Electric Strike
7	1	DT-A0-19	Automatic Door Operator
8	2	TA-8161-HC-PTO	Actuator Button
9	1	DH-Z86-F	Storeroom Function Lock