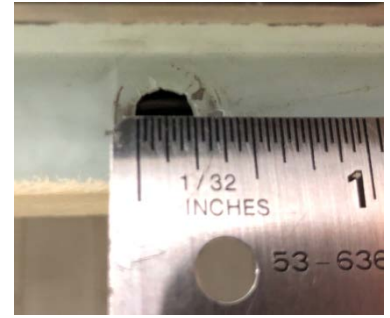




Type 64 (New Style)

Door Silencer Installation

Step #1 – Ensure silencer hole in frame is at least 1/4" diameter.



Step #2 – Place silencer against frame at approximately a 45 degree angle with the tip slightly in the hole.



Step #3 - Apply firm pressure with your thumb on the end of the silencer.



Step #4 - Align a 3/16" slot screw driver blade against the exposed ridge as shown below, and push the silencer bulb into the hole.



Step #5 - If required, press the silencer firmly with your thumb to fully seat it in the hole.

